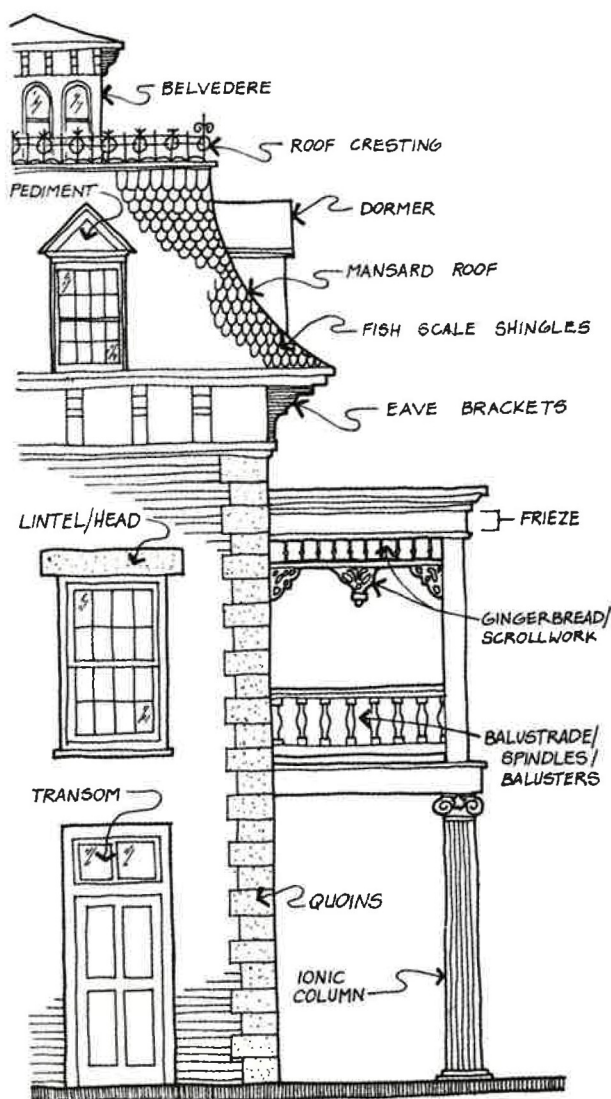


KING WILLIAM AREA — A WALKING TOUR



107 King William

Anton Wulff House

1870



Built of native limestone for Anton Wulff, a German immigrant, merchant and the city's first parks commissioner, this house is reminiscent of Italian hillside villas with its square tower and paired windows. Look under the eaves for the portrait of Wulff's daughter, Carolina, sculpted by her brother, Henry. To the left and

back of the house is a two-story rough-hewn stone barn, which was moved from a downtown site in 1982. The original owner, August Stuemke, operated one of the first lumberyards in the city. The cast iron rose arbor in the side garden was moved from the Cable ranch on the edge of the city in the 1970s. The Anton Wulff house and grounds are the headquarters of the San Antonio Conservation Society.

112 King William

Blondin House

1905

This Neoclassical structure is dominated by a full height porch with tall Ionic columns. Other interesting features are an Adams style elliptical attic window, a pediment with shingles in staggered rows, a door with side panels and a small second story balcony. The Blondin family developed the adjacent commercial area on S. St. Mary's Street.



116 and 120 King William
Joseph and John Ball Houses

1870



In 1868, the Ball Brothers, stonemasons from Elmendorf, Texas, built the two houses which were originally identical. The house at 120 remains virtually unchanged and is an excellent example of early Texas vernacular style. Note the standing seam metal roof. That house has a cellar which was once used for storing food.

Around 1903, the house at 116 was remodeled into a two story Victorian folk style.

King William Park and Bandstand

1892

The park, which looks intentional, was acquired by the city in 1901 for payment of delinquent taxes; it has been maintained as a park since that time. The bandstand was built in 1892 on the grounds of the United States Arsenal, just across the San Antonio River. It was moved to the park in 1953.



130 King William McDaniel Carriage House

1896/1972



Dr. and Mrs. Alfred McDaniel built this carriage house at the rear of their residence at 117 Madison. Its facade was restyled in 1972 to complement the area's architecture. Now the San Antonio Art League, the gallery-museum is free and open to the public.

203 King William Aaron Pancoast Sr. House 1891

A smaller frame building was built on the west part of the lot, in the late 1860s. There, Mr. Pancoast's daughters conducted an elementary school for neighborhood children. In the 1920s the main house was reconfigured to its present appearance. The adjacent home on Turner St. is a Pancoast family home as well.



208 and 210 King William Louis Bergstrom House & Cottage 1882-83/1910



Louis Bergstrom, a Swedish cotton, wool and hides dealer, built a one story house in 1882, adding a second story in 1900 for his growing family. Descendants owned the Victorian Italianate house until 1975. The Bergstroms built this cottage in 1910 for daughter Nellie and her dentist husband Stonewall VanWie.

217 King William Alexander Sartor, Jr. House 1882

Designed by Alfred Giles, an English-born architect, this small structure exhibits beautiful proportions and unique detailing. The walls are caliche block duplicating ashlar limestone with protruding mortar joints – often called a "conceit" construction.



The San Antonio Conservation Society was founded in 1924 and for over 70 years has played an important role in conservation and historic preservation in the community. Its purpose is "...to preserve and to encourage the preservation of historic buildings, objects and places relating to the history of Texas, its natural beauty and all that is admirably distinctive to our State, and by such physical preservation to keep the history of Texas legible and intact to educate the public, especially the youth of today and tomorrow, with knowledge of our inherited regional values." For information: San Antonio Conservation Society, 107 King William Street, San Antonio, Texas 78204, (210) 224-6163

The King William Association is an organization of residents and others dedicated to the preservation of the architectural heritage and the residential nature of the area. The neighborhood is protected by national, state and city historic designations. Tours of selected homes are held annually on the first Saturday of December. For information: King William Association, 1032 S. Alamo Street, San Antonio, Texas 78210, (210) 227-8786.



Walking Tour Map

●●●▶ ● Walking Tour Route

T Trolley Stops - Blue Route

① San Antonio Conservation Society

② Band Stand

③ King William Association Office

④ River Walk

⑤ Johnson Street Foot Bridge

⑥ Pioneer Flour Mill

⑦ Blue Star Art Complex

⑧ H.E.B. Headquarters

⑨ San Antonio River Authority

⑩ **Steves Homestead Museum**

225 King William Robert Hanschke House 1880

Robert Hanschke edited San Antonio's first German newspaper, the *Freie Presse fuer Texas*. The main building is of wood; the brick south wing was a later addition. Its thick walls and extra sturdy floors may have been built to support the printing press. Hanschke's initials are carved into the old carriage stone at the curb. These stones were used as steps

to enter or exit from horse-drawn carriages and buggies.

226 King William Ernst Altgelt House 1878

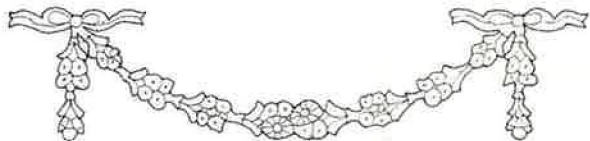
This two-story limestone residence, with Victorian galleries, is as significant for the activities of its builder as it is for its architectural character. German native Ernest Altgelt came to Texas in 1850, established the Hill Country town of Comfort and moved to San Antonio in 1866 to set up a law practice. A surveyor, he was responsible for the platting of the King William neighborhood. He named the street King William for Kaiser Wilhelm I of Prussia. Altgelt commissioned the house in 1878, but died shortly before it was finished. The placement of the outside stairway on the side of the house was done typically to save interior living space.

**236 King William Ernst Altgelt House 1866**

This was Ernst Altgelt's first house, built in 1866 with a later two-story addition. Part of the early structure is covered by imitation concrete stone.

241 King William Alexander Joske House 1900

This Colonial Revival house was the home of the son of the founder of a Texas mercantile empire that became known as Joske's of Texas and served its citizens for over 100 years. Interesting features include the shingle roof and tall chimneys, the Ionic columns, broken scroll pediments on the third floor windows, and the doorway with its limestone "basket handle" arch and supports. It is the only house in the area with a Texas granite curbstone.



SWAG, GARLAND FOLDING

242 King William William Sanger House 1905-06

Mr. Sanger, who was in the insurance business, built this house of buff-colored brick. Its five gables and six tall chimneys are typical of the eclectic style: Neoclassical porch with dentil molding, Italianate bracketed eaves, and shingle-style paired gables curving into recessed windows.

303 King William Stevens/James House 1881

A fine example of Italianate design using native limestone construction, this house with stone arched window heads, was built for John J. Stevens, a cattleman who imported the first Hereford cattle to Texas. He served as an early postmaster of San Antonio. In 1888, it was sold to Vinton Lee James, a local historian and the son of one of the Anglo-American families in San Antonio.

**306 and 308 King William Alfred Giles Twin Houses**

1883



These Victorian folk houses were designed by Alfred Giles. Note the carpenter scroll-saw canopies over the front windows, the wood balusters on the porches.

309 King William Charles Hummel House 1884

A building permit was issued to Charles Hummel, a gunsmith, for the construction of a house "not to exceed \$6,000". This Italianate house has a gable roof, bracketed eaves with fine stonework quoins on the corners.

**316 King William Max L. Oppenheimer House**

1900



Built at the beginning of this century, this brick house is a superb example of the Richardsonian Romanesque Revival style with arches of stone and brick.

317 King William Adolph Heusinger House 1883-85

Mr. Heusinger emigrated from Germany in 1850, and lived in Castroville, Texas. After moving to San Antonio, he entered the contracting business and later started a hardware store. This Italianate house was built of brick and later covered in plaster.



325 King William



This 1940s home recalls Art Moderne details such as the round window and curved glass block wall at its entry. This house and 321 King William were built on the former side yard and tennis court of the Groos house at 335 King William.

326 King William Henry Boerner House 1915

This two-story Neoclassical house with Corinthian columns was the home of Henry and Jennie Boerner. He worked for his uncle Edward Steves, Sr., in the lumber business.



332 King William Johanna Kalteyer House 1907



Built of stucco over wood lath, this house rises three stories to a pair of attic dormer windows. Johanna Kalteyer moved from 425 King William into this new house when she was widowed.

335 King William Carl Wilhelm August Groos House 1880

Designed by Alfred Giles for one of three founding bankers of the Groos National Bank, this is a superb example of Italian Villa Style. Delicate cast iron balustrades, columns and gingerbread define the porches. A belvedere crowns the roof. As with many other area houses, native limestone was used.



401 King William Norton/Polk/Mathis House

1876



The original house built by hardware merchant Russell Norton and enlarged by rancher Edward Polk. Later, the celebrated trail boss and cattleman, Ike T. Pryor, added the front porches, a brick wing and the Beaux Arts third story tower. The bold opulence of the design suggests something of the

prosperity which accompanied the arrival of the railroad in San Antonio in the late 1870s. This Italianate Victorian house has five types of columns, an intricate frieze, and is crowned by a square of wrought iron cresting over metal shingles.

404 and 410 King William Josiah Pancoast House & Cottage

1878-1900

Josiah Pancoast, a tailor, built the Classical Revival house at 404 in 1878; and, added a second story after 1886, as more room was needed for his seven children. In 1900 Mr. Pancoast built the Victorian cottage at 410 for \$1,200 on the site of his former tennis court.



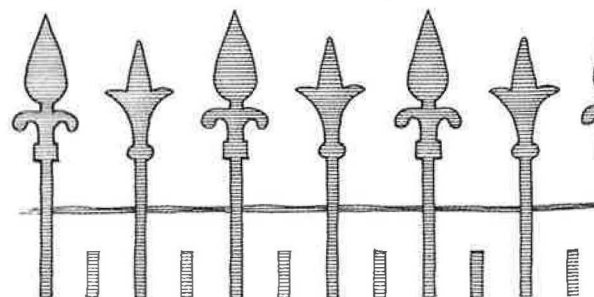
414 King William Ellis-Meusebach House 1884



Smith M. Ellis, the original owner, sold the house in 1889 to Otto Meusebach, son of Baron Ottofried Hans Von Meusebach, founder of Fredericksburg, Texas. The house is a classic Victorian folk cottage with a small front porch and cedar shingle roof.

419 King William Elias Edmonds House 1875

This simply designed house was constructed with materials brought by oxcart from Indianola. Note the stone lintels spanning the openings. Mrs. L.N. Edmonds operated a "Ladies Boarding School" here. An early graduate received a diploma for her attainments in "literary, classical and scientific knowledge and her polite and dignified deportment."



IRON FE

422 King William**Ike West Home****1887**

The unusual entrance of this Second Empire style house suggests that it was adapted from a pattern book design for a corner lot. Notice the simple cast iron crestings, wooden spindles, brackets and turned balustrades. The house built by Smith M. Ellis, was bought in 1802 by the rancher Sol West who passed it to his son Ike West.

425 King William**George Kalteyer House 1892**

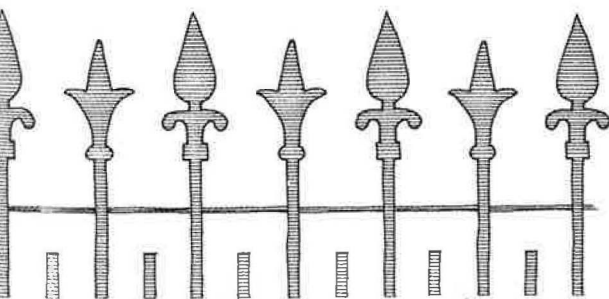
This house was deigned by architect James Riely Gordon, best known for his Texas courthouses, including the one for Bexar County in San Antonio. It reflects his interest in the powerful masonry forms that are associated with the Richardsonian Romanesque style. Notice the solid, heavy proportions; the banded, arched window heads; the turrets and the friezes above the second-story bay and entrance portico and around the larger tower. George Kalteyer was a prominent local druggist.

**431 King William****Edward Steves, Jr. House 1884**

One of three Steves houses at this intersection, the Italianate home was built as a wedding present for Edward Steves, Jr. The walls are of random-coursed ashlar limestone with raised mortar joints and fluted quoins at the corners. Note the heavily molded woodwork on the front porch. The semicircular rear porch, gazebo and garage were added in the 1980s.

432 and 434 King William J.M. Nix Houses 1900

These twin two-story wood frame Queen Anne homes were built by J. M. Nix, who later built the Nix Hospital Building in downtown San Antonio.



CE DETAIL

504 King William**Albert Steves House****1883**

Built by Alfred Giles for Albert, second son of Edward Steves, Sr., the house was enlarged and remodeled in 1900 into the present Italian villa style. The original building was of structural limestone, the addition of brick. The exterior of both are covered by scored stucco with limestone quoins on the corners of the

building. The acanthus leaf motif over the front porch was much in vogue at the time.

509 King William**Steves Homestead 1876**

The Edward Steves, Sr. residence is of Victorian French Second Empire design and constructed of smooth-dressed ashlar limestone. Immigrating from Germany in 1848 and subsequently settling in San Antonio Mr. Steves became a civic leader and the proprietor of a successful lumber business. The three-story home is a rectangular block with the kitchen and servants' quarters forming an ell to the rear. The house has a concave mansard roof with dormer windows.; cast iron cresting, bracketed eaves; and tall round windows. Also present on the property are a carriage house, servants' quarters and a natatorium, the first indoor swimming pool in the city. The fountain in the side yard was purchased by Mr. Steves at the Philadelphia Centennial exposition of 1876. Owned by the San Antonio Conservation Society, the property is operated as a house museum.

**523 King William****Carl Harnisch House 1884**

This Queen Anne house was one of the earlier brick homes in the city. Of note are the many porches and gables decorated with wooden scrollwork; the brick arch over the front door with carved keystone; and the canopy over the front stoop supported by slender twisted iron posts. Mr. Harnisch owned an elegant ice

cream and confectionery shop in San Antonio.

528 King William August Biesenbach House 1881

Mr. Biesenbach was a successful mercantile businessman who built this Victorian cottage for \$1,800. The walls are stuccoed; the hipped roof is metal-clad with gabled dormers. The overhanging eaves with exposed rafter ends and the diagonal porch-support braces are characteristic of the Stick style.



205 E. Guenther**Carl H. Guenther House and Pioneer Flour Mills**

The Pioneer Flour Mill was established on this site in 1859. It is the oldest continuously operating flour mill in the state of Texas. The castle-like concrete tower was erected in 1923, and for a brief period was the tallest structure in the city. Like the Steves family, the Guenthers also had a neighborhood family compound; all four houses in the 200 block of

East Guenther were dwellings of family members. When built, these houses were not separated from the senior Guenther's home by the San Antonio River; the original river channel ran behind the mill. Carl Guenther immigrated to Texas from Germany in 1851 and settled in Fredericksburg where he built his first gristmill. He moved to San Antonio in 1859 and established this mill, which was later expanded to Pioneer Flour Mills. The original one-story house where he reared his family had two upper stories added in later years. The home is restored and contains a restaurant, gift shop and house museum. The restaurant is open daily from 7 a.m. to 3 p.m.; the museum stays open until 5 p.m.

219 E. Guenther Adolph Wagner House 1885

This Victorian Cottage with a classical porch was built by Adolph Wagner, husband of Amanda Guenther. The couple's initials are carved into the pediment of the house. Mr. Wagner, the treasurer of Pioneer Flour Mills, was in business selling crockery and glassware.

**221 E. Guenther Herman Schuchard House 1892**

This Queen Anne house with its expansive side yard was built by Herman Schuchard, a druggist, and his wife, Matilda, daughter of Carl and Henrietta Guenther.

222 E. Guenther Albert Beckmann House 1886

This brick Queen Anne cottage was built by Albert Beckmann, an architect who received his formal training in Germany. His wife was Marie Dorothea, another daughter of the Guenthers. When built, the address was 529 Madison Street. In 1933 the front gate was moved around the corner to Guenther Street and the number 222 posted on a door facing that street.

**514 Madison William Kalteyer House 1895**

The first three houses on the right were constructed facing S. Alamo Street. Built by a druggist, 514 Madison Street is a Queen Anne house with a pitched roof and asymmetrical wrap-around two-story porch. In the 1970s it was lifted up, turned around and moved to face Madison Street.

525 Madison Gus Froebel House 1890

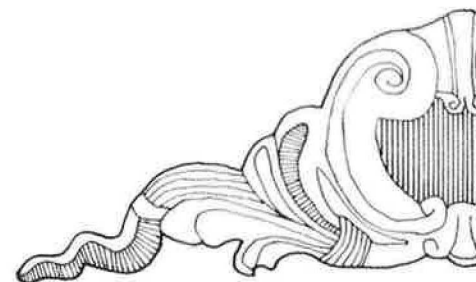
This house underwent major remodeling in 1919 when the porches were added, roof extended, and the exterior stuccoed. Until that time, the backyard went through to King William Street and was planted as a vineyard.

**506 Madison Carl Griesenbeck House 1909**

Mr. Griesenbeck, a former Confederate emissary, died shortly after his house was built. The cottage is Craftsman style with a hipped roof, exposed rafters and a transomed door.

505 Madison Albert Steves Carriage House

A shingle cottage style structure, built as a combined stable and carriage house for 504 King William, was remodeled into a residence about 1925. Note the fish scale shingles on the second level.



TURN LEFT ONTO JOHNSON STREET AND WALK TOWARD THE BRIDGE

Johnson street Foot Bridge



A bridge spanning the San Antonio River on Commerce St. from 1880-1914 was called the O. Henry Bridge after the author who used it in some of his stories. In 1914 the iron span was moved to the Johnson Street site. It was removed for extensive river redevelopment in the 1960s. The pedestrian bridge and spires seen today were placed across the

river at Johnson Street in 1983 and approximate the original.

River Walk

When the King William River Walk, with its park-like atmosphere, was completed in the late 1970s, it was then possible to walk into the downtown river-bend. When the river in this area is empty, control gates are closed for maintenance or flood prevention. Along the River Walk dozens of native and non-native types of vegetation can be observed.

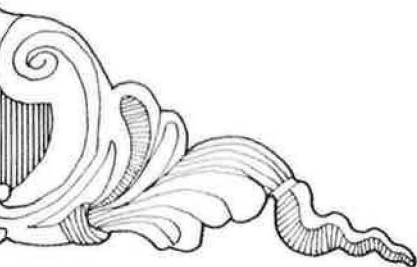


CONTINUE ALONG THE RIVERWALK, GO UNDER A BRIDGE AND AT THAT POINT LEAVE THE RIVER AND WALK UP TO WASHINGTON STREET.

The Upper Mill Park

Following construction of his lower mill in 1859, Carl Guenther built another dam and mill upstream at this location in 1868. It was dismantled in 1926 when the river channel was straightened. The foundation of the mill may be seen abutting the river.

CROSS THE RIVER



WAMENT

H-E-B Corporate Headquarters- United States Arsenal Site

1859

An adjunct to the Quartermaster Depot housed at the Alamo, the U.S. Arsenal was established in 1859 to supply arms and munitions to the frontier forts in Texas. It was occupied by Confederate forces in the 1860s. During both world wars, it was a major supply depot. In 1985 the H.E. Butt Grocery Company bought the ten acres on the bank of the river and undertook adaptive use of existing structures for their corporate headquarters.



228 Washington The Martin Froebel House 1866



Built of caliche block, this is one of the area's earliest houses. A distinctive, Neoclassical pediment with applique enlivens the otherwise simple Early Texas style home.

231 Washington Gustav Groos House 1875



This Victorian stone house with its carpenter Gothic porch remained in the same family for over 100 years. It was the home of Gustav Groos, who was in the banking business with his two brothers.

213 Washington Blersch-Watson House 1859

A one-story raised cottage with classical Victorian folk details, it was the home of Gustav Blersch who operated a stationery and book store. It is one of the oldest houses in the area and one of the few examples remaining in San Antonio of the raised cottage style, often built in the Gulf Coast region for cooling and ventilation purposes.



209 Washington Mitchell-Oge House 1857/1882



The original structure consisted of a raised cottage and was built by Newton A. Mitchell. In 1882 Louis Oge, a former Texas ranger and Indian fighter, commissioned Alfred Giles to enlarge the Greek Revival house. The present roof, the second floor, pediment, porches and doorways date from this period.